



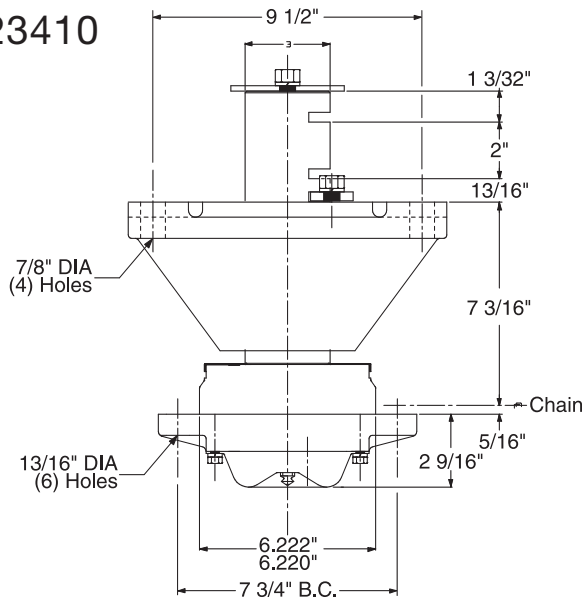
TRACTION WHEEL HUBS

BEARING HOUSING

Omni Metalcraft Corp. offers two different designs to house the traction wheel bearings: a cast hub or a fabricated hub.

Omni Cast Hub – This type is for use with the plate type Traction Wheel Turn only. It provides an easy means of disassembling and replacing the hub and base without replacing the entire turn. This could also decrease system down-time.

#23410



Fabricated Hub (not shown) - This type can be used with the plate or spoke type Traction Wheel Turn. The shaft holding mechanism becomes a part of the heavy duty welded frame.

PART #	TYPE	WEIGHT	MAX. CAPACITY
23410	Tapered Roller Bearing	135	8000#
23626	Metallized Graphite	145	8000#
*40127	Metallized Graphite Inverted Power & Free	135	8000#
*40563	Tapered Roller Bearing Inverted Power & Free	125	8000#

*Contact our engineering department for specifications

TRACTION WHEEL BEARINGS

These two types of traction wheel bearings cover the vast majority of system requirements. Both types can be utilized with a cast hub or with a fabricated hub and are suitable for all speed ranges.

Tapered Roller Bearings* - These Style T bearings are normally furnished as standard. They are suitable for operating temperatures up to 250 degrees F. This bearing design has a lubricant reservoir so that the bearing only has to be lubricated at extended intervals.

Metallized Carbon Bearings - These Style M bearings are designed for use in higher temperatures up to 750 degrees F. A typical application is where oven or washers are involved in the system.

#23626

