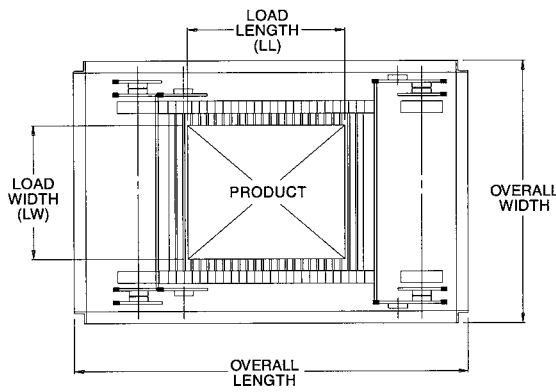




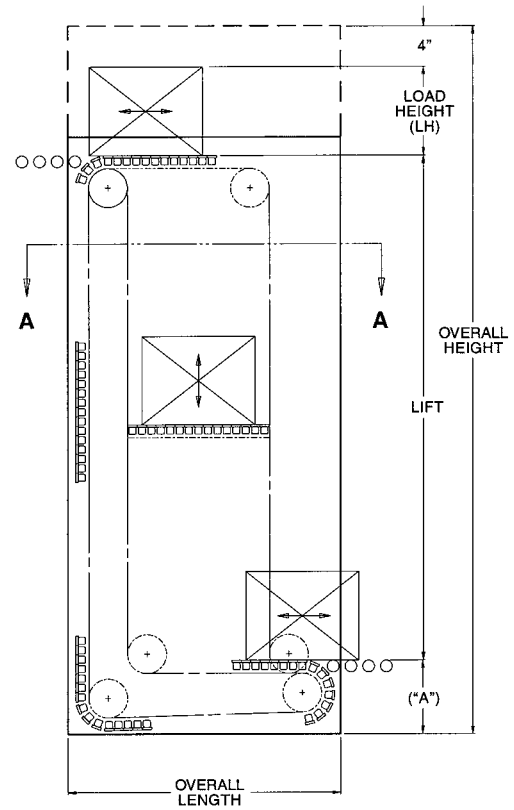
CVC

STANDARD SPECIFICATIONS

Standard Specifications									
Model Number	Platform Capacity	Std. Chain Speed	Load Length* (LL)	Load Width (LW)	Std. Min. Load Height	Min. Elevation at Base (A)**	Frame Overall Length	Frame Overall Width	Frame Const.
CVC-100	100 lbs.	90 f.p.m.	12 - 36 in.	8 - 36 in.	3 in.	18 in.	LL + 31-1/2 in.	LW + 20-1/2 in.	Sheet Metal
CVC-300	300 lbs.	60 f.p.m.	24 - 60 in.	24 - 48 in.	5 in.	24 in.	LL + 46-1/2 in.	LW + 24-3/4 in.	Structural Angle
CVC-600	600 lbs.	55 f.p.m.	24 - 72 in.	24 - 48 in.	5 in.	28 in.	LL + 54-3/4 in.	LW + 30-3/4 in.	Structural Angle
CVC-1200	1200 lbs.	40 f.p.m.	48 - 84 in.	36 - 72 in.	5 in.	36 in.	LL + 66-1/2 in.	LW + 36-1/4 in.	Structural Angle
CVC-4000	4000 lbs.	35 f.p.m.	48 - 96 in.	36 - 72 in.	5 in.	38 in.	LL + 92-1/2 in.	LW + 53 in.	Structural Tubing



Section A-A (Enlarged)



REQUIRED ORDER INFORMATION:

- Product Description
Width and Length
Height and Weight
Contact Surface
- Infeed and Discharge Height (Lift)
- Maximum Throughput (Units/Minute)
- Travel Direction (Up, Down, Reversible)
- Electrical Specifications (Req'd Voltage)
- Required Chain Speed
(This must match infeed and discharge conveyor speeds.)
- Paint Color