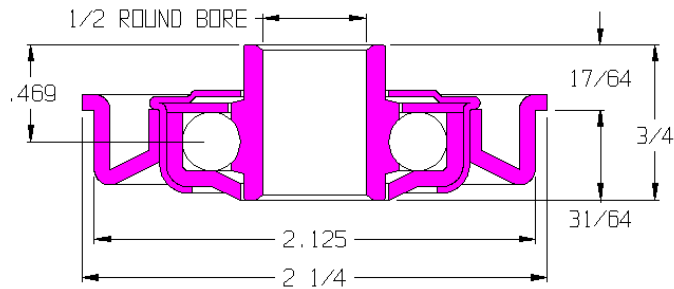


44836-GP

Load Capacity	145 lbs
Temp. Range	-40°F to 300°F

Features

- Unground, non-precision
- Stamped metal construction
- Zinc plated mild steel
- Full ball compliment
- Stamped metal adapter
- Grease packed



Application Info

Recommended for slow speed powered conveyor and gravity conveyor applications. The lack of seals or shields reduces drag but offers no protection against dirt and debris. Not recommended for dirty or dusty environments. Not recommended for high speeds or CDLR.

Similar Bearings

- 44836-O is lightly oiled.
- 44837-GP has an adapter for 2-1/2 OD tubes.
- 114735-GP is an equivalent poly-housed ABEC bearing.

Special Notes

- 102181-GP is the bearing part number.
- 102057 is the adapter part number.

