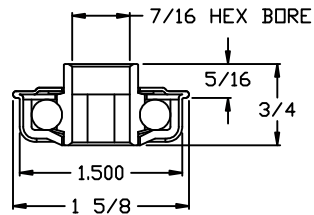
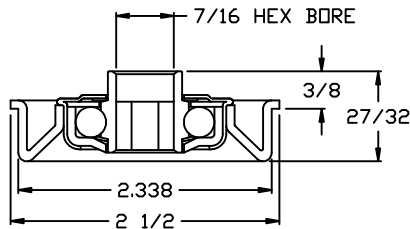


NOTES:
 * ROLLER CAPACITY = 285 LBS.

(1) REQ'D



102053-GP
 * UNGROUND PRESS FIT
 * Load Capacity = 145 lbs
 * Temp. Range = -40°F to 250°F
 * Grease Packed
 * Non-precision
 * Stamped Metal Construction
 * Zinc Plated Mild Steel
 * Front Polymer Seal
 * Replaceable



102310
 * UNGROUND CRIMPED
 * Load Capacity = 145 lbs
 * Temp. Range = -40°F to 250°F
 * Grease Packed
 * Non-precision
 * Stamped Metal Construction
 * Zinc Plated Mild Steel
 * Front Polymer Seal
 * Stamped Metal Adapter

QTY	DESCRIPTION
1	TUBE: 2-1/2" OD TO 1-11/16" OD X 14 GA. ZINC PLATED
1	AXLE: 7/16" HEX MILD STEEL - SPRING RETAINED (ONE END)
1	LG. BRG: 102310 UNGROUND CRIMPED
1	SM. BRG: 102053-GP UNGROUND PRESS FIT
OmniMetalcraft corp. ALPENA, MI U.S.A. (989) 358-7000	
STANDARD ROLLER NUMBER: 41817-24	
LABELED AS:	
DRAWN BY: erinh	DWG NO.
DATE: 8/1/2016	Q8622-1
REF#: 1050810	