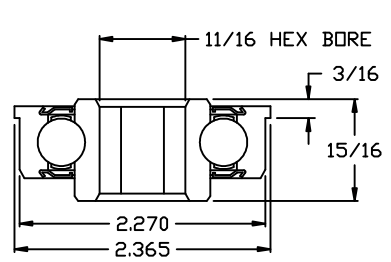


NOTES:
 * ROLLER CAPACITY = 700 LBS.

(1) REQ'D

QTY	DESCRIPTION
1	TUBE: 2-1/2" OD X 11 GA. MILD STEEL
1	AXLE: 11/16" HEX MILD STEEL - SPRING RETAINED (ONE END)
2	BEARING: 114128-GP ALL METAL PRECISION
2	SPROCKET: 40A22 HEAT TREATED



114128-GP
 * ALL METAL PRECISION
 * Load Capacity = 2845 lbs
 * Temp. Range = -10°F to 225°F
 * Grease Packed
 * ABEC-1 Precision
 * Hardened Chrome Steel
 * Precision Ground Finish
 * Front & Rear Seals
 * Front & Rear Shields
 * Ball Retainer
 * Replaceable

OmniMetalcraft Corp. ALPENA, MI U.S.A.
 (989) 358-7000

STANDARD ROLLER NUMBER: 42038-24

LABELED AS:
 DRAWN BY: erinh DATE: 8/1/2016 REF#: 995134
 DWG NO. Q8622-1