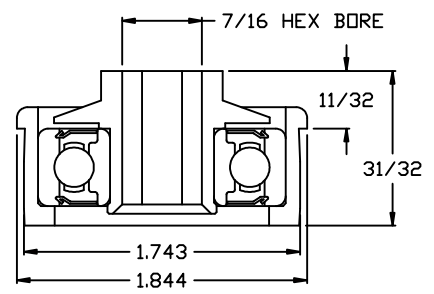


NOTES:  
 \* ROLLER CAPACITY = 289 LBS.

(1) REQ'D

QTY	DESCRIPTION
1	TUBE: 1.9" OD X 16 GA. GALVANIZED
1	AXLE: 7/16" HEX MILD STEEL - SPRING RETAINED (ONE END)
2	BEARING: 114135-GP PLASTIC HOUSED PRECISION



114135-GP  
 \* POLYPROPYLENE HOUSED ABEC  
 \* Load Capacity = 300 lbs  
 \* Temp. Range = -10°F to 200°F  
 \* Grease Packed  
 \* ABEC-1 Precision  
 \* Polypropylene Outer Housing  
 \* Polypropylene Hex Adapter  
 \* Front & Rear Shields  
 \* Ball Retainer

**OmniMetalcraft Corp.** ALPENA, MI U.S.A.  
 (989) 358-7000

STANDARD ROLLER NUMBER: 42076-24

LABELED AS:  
 DRAWN BY: erinh  
 DATE: 7/29/2016  
 REF#: 995134  
 DWG NO.  
 Q8622-1