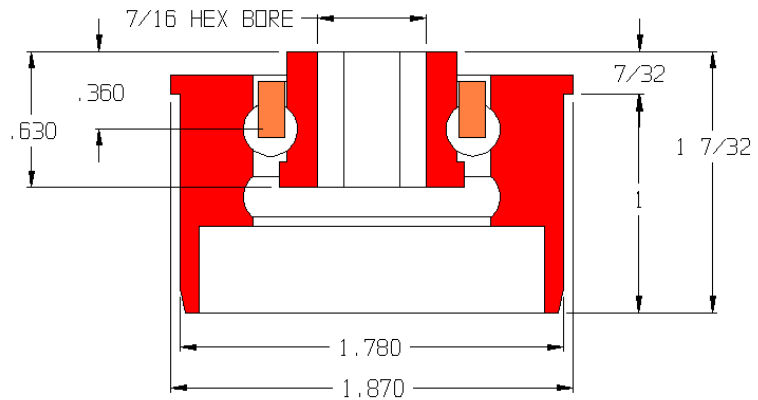


115178

Load Capacity	69 lbs
Temp. Range	Up to 180°F

Features

- Molded plastic body
- 420 stainless steel balls
- No lubrication required
- Ball retainer
- Replaceable



Application Info

Designed specifically for 1.9 OD x 16 ga. stainless tube. An ideal bearing for wash-down and corrosive applications. No lubrication is required between the metal balls and plastic raceways. Normal operation can be maintained with the bearing completely submerged in fluid. Only light loads and slow speeds are recommended.

Special Notes

Replacement bearing for 114606. The larger body OD allows this bearing to be installed in 1.9 OD x 16 ga. tubing.

