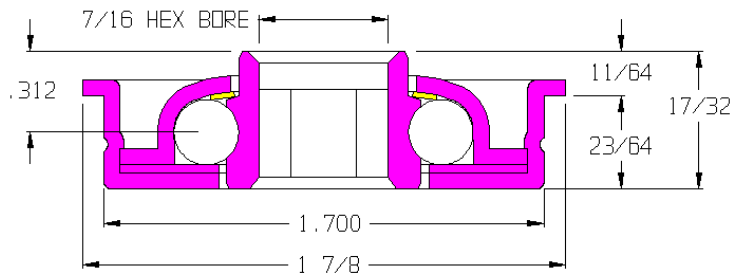


## 102279-GP

Load Capacity	135 lbs
Temp. Range	-20°F to 250°F
Max Speed	200 rpm

### Features

- Unground, non-precision
- Stamped metal construction
- Zinc plated mild steel
- Full ball compliment
- Front seal
- Grease packed



### Application Info

Grease lubricates the bearing so it is recommended for lineshaft applications as well as gravity applications. The grease creates rotational drag so it is not recommended for extremely light weight gravity applications. A polymer sealing ring holds out large particle debris but is not effective against a lot of dust or fine particle dust. Not recommended for high speeds or CDLR.

### Similar Bearings

- 102279-O is lightly oiled.
- 115899-GP is not sealed.
- 114135-GP is an equivalent poly housed ABEC bearing.

