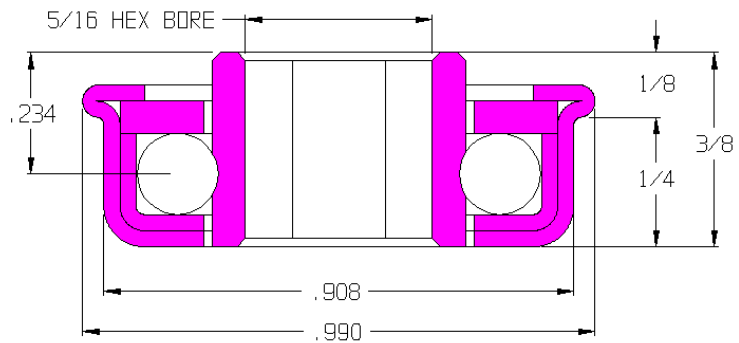


### 102152-GP

Load Capacity	30 lbs
Temp. Range	-20°F to 300°F

#### Features

- Unground, non-precision
- Stamped metal construction
- Zinc plated mild steel
- Full ball compliment
- Replaceable
- Grease packed



#### Application Info

Recommended for gravity conveyor and light-duty powered conveyor applications. Grease keeps the bearing lubricated through continuous use. The lack of seals or shields reduces drag but offers no protection against dirt and debris. Not recommended for dirty or dusty environments. Not recommended for high speeds.

#### Similar Bearings

- 102152-O is lightly oiled.
- 102168-GP has a 1/4 hex bore.
- 102171-O has a 3/8 hex bore.
- 102245-O has a 1/4 dia. round bore.
- 102272-O has a 5/16 dia. round bore.

