

## PLASTIC BELT CONVEYOR QUOTATION WORKSHEET

Company \_\_\_\_\_ Date \_\_\_\_\_  
 Contact \_\_\_\_\_ Quote Due \_\_\_\_\_ Desired Delivery \_\_\_\_\_  
 Phone No.: \_\_\_\_\_ Contact Email: \_\_\_\_\_ State \_\_\_\_\_  
 Omni Sales Contact: \_\_\_\_\_ Quote #: \_\_\_\_\_  
 Quantity: \_\_\_\_\_

### Product Specs:

Max:  
 - Width (inches): \_\_\_\_\_ Length (inches): \_\_\_\_\_  
 - Height (inches): \_\_\_\_\_ Weight (lbs): \_\_\_\_\_  
 Min:  
 - Width (inches): \_\_\_\_\_ Length (inches): \_\_\_\_\_  
 - Height (inches): \_\_\_\_\_ Weight (lbs): \_\_\_\_\_  
 Description: \_\_\_\_\_  
 Max. Qty.: \_\_\_\_\_ Total Live Load\*: \_\_\_\_\_  
 Temperature  
 -Environment: \_\_\_\_\_  
 -Product: \_\_\_\_\_  
 Wet  Dry  Other \_\_\_\_\_

### Conveyor Construction:

- Welded
    - Painted  Epoxy Painted
    - Powder Coated Color RAL: \_\_\_\_\_
    - Stainless Steel
      - Mill Finish  Polished
  - Bolt-Together Galvanized
- Bed Type:  Slider Bed  Open Style Slider Bed

### Conveyor Orientation:

- Horizontal  Incline  Decline

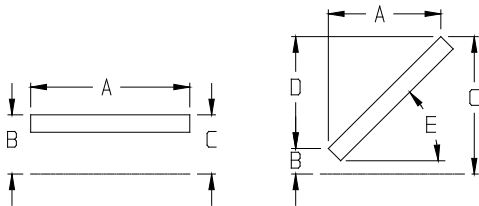
A = \_\_\_\_' - \_\_\_\_" Horizontal Overall Length

B = \_\_\_\_' - \_\_\_\_" Top of Belt

C = \_\_\_\_' - \_\_\_\_" Top of Belt

D = \_\_\_\_' - \_\_\_\_: Elevation Change

E = \_\_\_\_' - \_\_\_\_" Degree (Approx.)



- Curve: \_\_\_\_\_" Inside Radius
- Degree of Curve  45  90  180  Other \_\_\_\_\_
- Curve tangent typically (2x) the belt width. (Minimum 24")

### Modular Plastic Belt Specs:

Belt Width: \_\_\_\_\_ Inches Belt Style: \_\_\_\_\_

### Application Design Needs:

- Stainless Steel Wash Down  Sanitary
- Other \_\_\_\_\_

(For Help: [www.omni.com/products/ss/index.html](http://www.omni.com/products/ss/index.html))

### Application Information:

Product Enters By:

- Conveyed On  Fork Truck
- Robot  Other \_\_\_\_\_

Product Exits By:

- Conveyed off  Fork Truck
- Robot  Other \_\_\_\_\_

- Quantity of Starts and Stops per Day \_\_\_\_\_

- \*Will the Conveyor be started with a load??

- Yes  No  Soft Start Required?

### Support Type:

- Legs  Ceiling Supports
- None Top of Belt: \_\_\_\_\_

### \*Speed:

- Fixed (FPM) \_\_\_\_\_
- Variable Low Speed (FPM) \_\_\_\_\_
- High Speed (FPM) \_\_\_\_\_
- AC Speed Controller  DC Speed Controller

### Drive Type:

- Under Hung  Shaft Mount  Side Mount

### Drive Location:

- Discharge End  Center

### Plant Voltage:

- 110V Single Phase  460V Three Phase
- 220V Single Phase  208V Three Phase
- 220V Three Phase  575V Three Phase

Other: \_\_\_\_\_

**\*Unless otherwise noted Omni will assume that conveyors are fully loaded and require soft starts.**

Approval Drawing Required:  Yes  No